



MONTHLY MEMBERSHIP PROGRESS REPORT

District 18 N

Results as of: 5/31/2014

GMT: CARL HARRELL

LOCATION GEORGIA

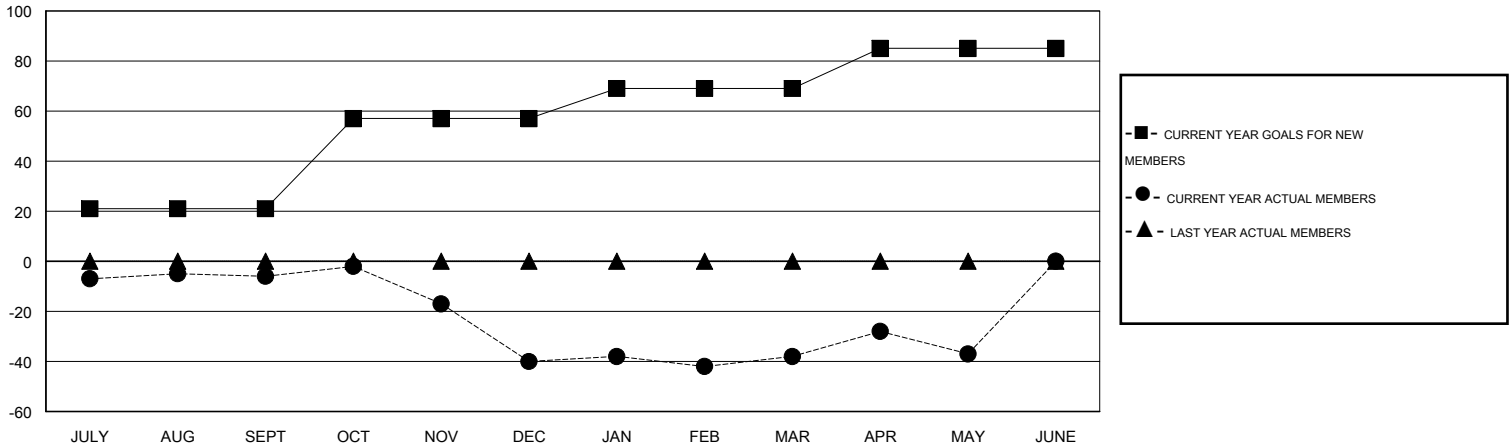
GMT CA 1

Clubs					Members				
RESULTS FOR 2013-2014					RESULTS FOR 2013-2014				
QUARTER	NEW CLUB GOAL	ACTUAL NEW CLUBS	ACTUAL DROPPED CLUBS	ACTUAL NET GAIN/LOSS	QUARTER	NEW MEMBER GOAL	ACTUAL TOTAL MEMBERS ADDED	ACTUAL DROPPED MEMBERS	ACTUAL NET GAIN/LOSS
JULY/AUG/SEPT	0	0	0	0	JULY/AUG/SEPT	21	34	40	-6
OCT/NOV/DEC	1	0	0	0	OCT/NOV/DEC	36	40	74	-34
JAN/FEB/MAR	0	0	0	0	JAN/FEB/MAR	12	42	40	2
APR/MAY/JUNE	0	0	0	0	APR/MAY/JUNE	16	31	30	1

GOALS AND ACTUAL NEW CLUBS CUMULATIVE



GOALS AND ACTUAL MEMBERS CUMULATIVE



DROPPED CLUBS: 0	38 CLUBS OF 68 ADDED 1 OR MORE NEW MEMBERS	<u>GENDER DISTRIBUTION</u>	
<u>DROPPED MEMBERS</u>		MALE	1,107 (71.10%)
DECEASED	28	FEMALE	450 (28.90%)
CLUB CANCELLED	0	FAMILY UNIT MEMBERS 303 HEAD OF HOUSEHOLD 146 NON-HEAD OF HOUSEHOLD 157	
OTHER	156		
TOTAL	184		
CLICK HERE FOR HEALTH ASSESSMENT DATA			